

**Phospho-ZBTB16(Y334) Antibody**  
**Affinity Purified Rabbit Polyclonal Antibody (Pab)**  
**Catalog # AP3575a**

**Specification**

---

**Phospho-ZBTB16(Y334) Antibody - Product Information**

Application	WB, DB,E
Primary Accession	<a href="#">Q05516</a>
Reactivity	Human
Host	Rabbit
Clonality	Polyclonal
Isotype	Rabbit IgG
Calculated MW	74274

**Phospho-ZBTB16(Y334) Antibody - Additional Information**

**Gene ID** 7704

**Other Names**

Zinc finger and BTB domain-containing protein 16, Promyelocytic leukemia zinc finger protein, Zinc finger protein 145, Zinc finger protein PLZF, ZBTB16, PLZF, ZNF145

**Target/Specificity**

This ZBTB16 Antibody is generated from rabbits immunized with a KLH conjugated synthetic phosphopeptide corresponding to amino acid residues surrounding Y334 of human ZBTB16.

**Dilution**

WB~~1:1000

DB~~1:500

E~~Use at an assay dependent concentration.

**Format**

Purified polyclonal antibody supplied in PBS with 0.09% (W/V) sodium azide. This antibody is purified through a protein A column, followed by peptide affinity purification.

**Storage**

Maintain refrigerated at 2-8°C for up to 2 weeks. For long term storage store at -20°C in small aliquots to prevent freeze-thaw cycles.

**Precautions**

Phospho-ZBTB16(Y334) Antibody is for research use only and not for use in diagnostic or therapeutic procedures.

**Phospho-ZBTB16(Y334) Antibody - Protein Information**

**Name** ZBTB16

**Synonyms** PLZF, ZNF145

**Function** Acts as a transcriptional repressor (PubMed:[10688654](#), PubMed:[24359566](#)).

Transcriptional repression may be mediated through recruitment of histone deacetylases to target promoters (PubMed:[10688654](#)). May play a role in myeloid maturation and in the development and/or maintenance of other differentiated tissues. Probable substrate-recognition component of an E3 ubiquitin-protein ligase complex which mediates the ubiquitination and subsequent proteasomal degradation of target proteins (PubMed:[14528312](#)).

#### **Cellular Location**

Nucleus. Nucleus, nuclear body

#### **Tissue Location**

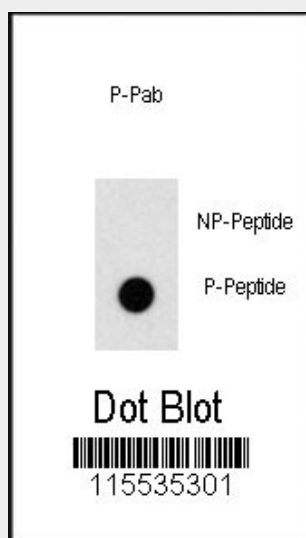
Within the hematopoietic system, PLZF is expressed in bone marrow, early myeloid cell lines and peripheral blood mononuclear cells. Also expressed in the ovary, and at lower levels, in the kidney and lung

### **Phospho-ZBTB16(Y334) Antibody - Protocols**

Provided below are standard protocols that you may find useful for product applications.

- [Western Blot](#)
- [Blocking Peptides](#)
- [Dot Blot](#)
- [Immunohistochemistry](#)
- [Immunofluorescence](#)
- [Immunoprecipitation](#)
- [Flow Cytometry](#)
- [Cell Culture](#)

### **Phospho-ZBTB16(Y334) Antibody - Images**



Dot blot analysis of anti-Phospho-ZBTB16-pY334 Antibody (Cat.#AP3575a) on nitrocellulose membrane. 50ng of Phospho-peptide or Non Phospho-peptide per dot were adsorbed. Antibody working concentrations are 0.5ug per ml.

### **Phospho-ZBTB16(Y334) Antibody - Background**

ZBTB16 is a member of the Krueppel C2H2-type zinc-finger protein family. It is a zinc finger

transcription factor that contains nine Kruppel-type zinc finger domains at the carboxyl terminus. This protein is located in the nucleus, is involved in cell cycle progression, and interacts with a histone deacetylase.

#### **Phospho-ZBTB16(Y334) Antibody - References**

Labbaye,C., Nat. Cell Biol. 10 (7), 788-801 (2008)  
Kang,S.I., Biochem. Biophys. Res. Commun. 369 (4), 1209-1214 (2008)  
Felicetti,F., Cancer Res. 68 (8), 2745-2754 (2008)